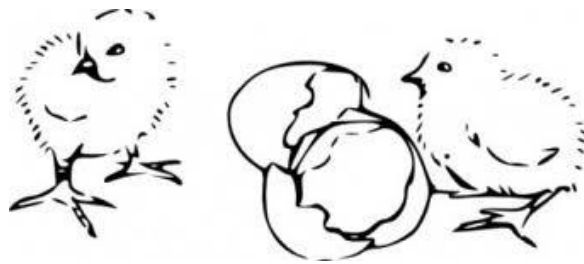


# Missaukee County Poultry Project Record Book



Name: \_\_\_\_\_

Address: \_\_\_\_\_

Phone: \_\_\_\_\_ Age as of January 1, \_\_\_\_\_ Years Old

4-H Club \_\_\_\_\_

Leader \_\_\_\_\_ Years in project \_\_\_\_\_

## Questions

1. This is what I do to keep my birds healthy:

---

---

---

2. This is what I enjoy most about the poultry project:

---

---

---

3. These are 2 goals I have for next year's poultry project:

---

---

---

4. What temperature should the brooding area be? \_\_\_\_\_

5. What are the four grades of egg shells? \_\_\_\_\_

6. Name three factors used to grade a carton of eggs.

---

7. How many eggs can a chicken lay each day? \_\_\_\_\_

8. A dual-purpose chicken is one that is raised for both \_\_\_\_\_ & \_\_\_\_\_.

9. How many days does it take to hatch an egg?

- a. Chicken \_\_\_\_\_
- b. Duck \_\_\_\_\_
- c. Turkey \_\_\_\_\_
- d. Goose \_\_\_\_\_
- e. Pheasant \_\_\_\_\_
- f. Guinea \_\_\_\_\_
- g. Quail \_\_\_\_\_
- h. Peacock \_\_\_\_\_

10. List 6 different types of combs: \_\_\_\_\_

---

11. What are three areas which should be examined when evaluation layers?

---

---

---

12. The short feather in the middle of the wing that separates the primary feathers from the secondary feathers, also called the key feather is called: \_\_\_\_\_

13. A parasitic infestation that kills chicks kept in damp, unclean housing is called:

---

**14. The practice of trimming the combs, wattles, and ear lobes of Modern Game and Old English Game Cocks is called: \_\_\_\_\_**

**15. Name five Bantam breeds of chickens: \_\_\_\_\_,**  
 \_\_\_\_\_,  
 \_\_\_\_\_,  
 \_\_\_\_\_,

**16. Skin color of Breeds: List one of the following- Yellow, White, Pinkish, or Black for each breed.**

**Brahma \_\_\_\_\_**

**Silkie \_\_\_\_\_**

**Jersey Giant \_\_\_\_\_**

**Australorp \_\_\_\_\_**

**Cornish \_\_\_\_\_**

**Plymouth Rock \_\_\_\_\_**

**Rhode Island Red \_\_\_\_\_**

**Sussex \_\_\_\_\_**

**Wyandotte \_\_\_\_\_**

**New Hampshire \_\_\_\_\_**

**Houdan \_\_\_\_\_**

**Orpington \_\_\_\_\_**

**17. To examine the contents of an egg with light in a dark room: \_\_\_\_\_**

Expenses: (List what was spent during the project year for feed, supplies, equipment)

Date	Item	Value

Total: \$

**Match each term with the correct description**

**Blackhead, Coccidiosis, Marek's Disease, Newcastle, Pullorum, Avian Pox, Coryza,  
Avian Influenza**

\_\_\_\_\_

Caused by bacterium salmonella

\_\_\_\_\_

Viral Disease affecting the respiratory, digestive and/or nervous system of many species of birds.

\_\_\_\_\_

Caused by protozoa carried by the cecal worm, which infects chickens & turkeys

\_\_\_\_\_

Caused by a virus and kills chicks, causes economic losses due to a severe drop in egg production in laying flocks

\_\_\_\_\_

Relatively slow-spreading viral disease, characterized by wart like nodules on the skin

\_\_\_\_\_

Caused by a herpes virus that affects mainly chickens

\_\_\_\_\_

This parasite attacks the intestine, causing diarrhea, unthriftiness & death

\_\_\_\_\_

Caused by the bacterium haemophilus Paragallinarum

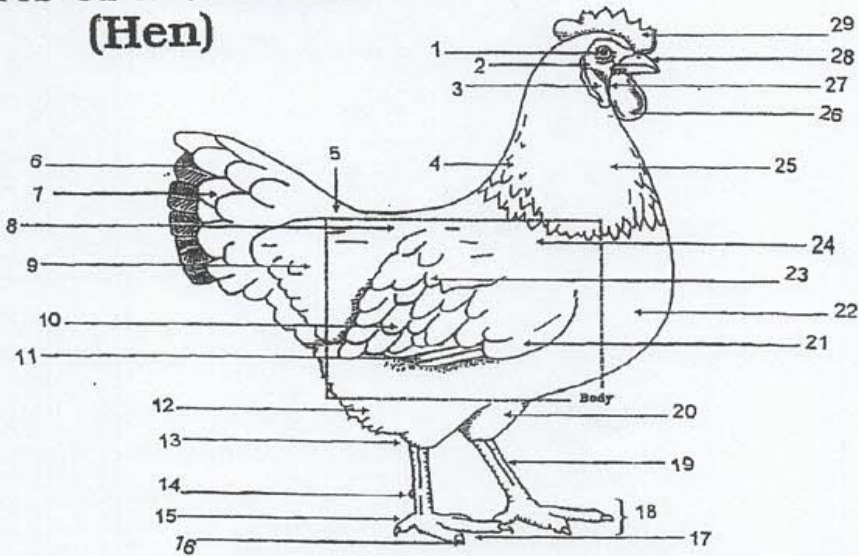
**Match each term with the correct description**

**Tape Worm, Capillaria Worm, Cecal Worms, Large Roundworm, Mites, Lice, Fleas, Ticks**

- \_\_\_\_\_ Most damaging of all worms, can cause reduction in nutrient absorption, intestinal blockage & death
- \_\_\_\_\_ Can live for more than 1 year without feeding, will have decrease in egg production & weight gain
- \_\_\_\_\_ 6 legged, flat bodied insect, broad round head- females lay 50-300 eggs at a time
- \_\_\_\_\_ Parasitic flatworm, has a long ribbon like body with many segments
- \_\_\_\_\_ Grow in the ceca ( two blind pouches at the junction of the small & large intestine)
- \_\_\_\_\_ Attach themselves to the skin & wattles on the head of birds
- \_\_\_\_\_ (warm weather pest) suck blood from the bird at night & then hide in the cracks & crevices of the house during the day
- \_\_\_\_\_ Parasitic nematode, found in the urinary bladder, and occasionally in the kidneys

Label all body parts

## Parts of a Chicken (Hen)



**POULTRY**  
LEARNING LABORATORY KIT

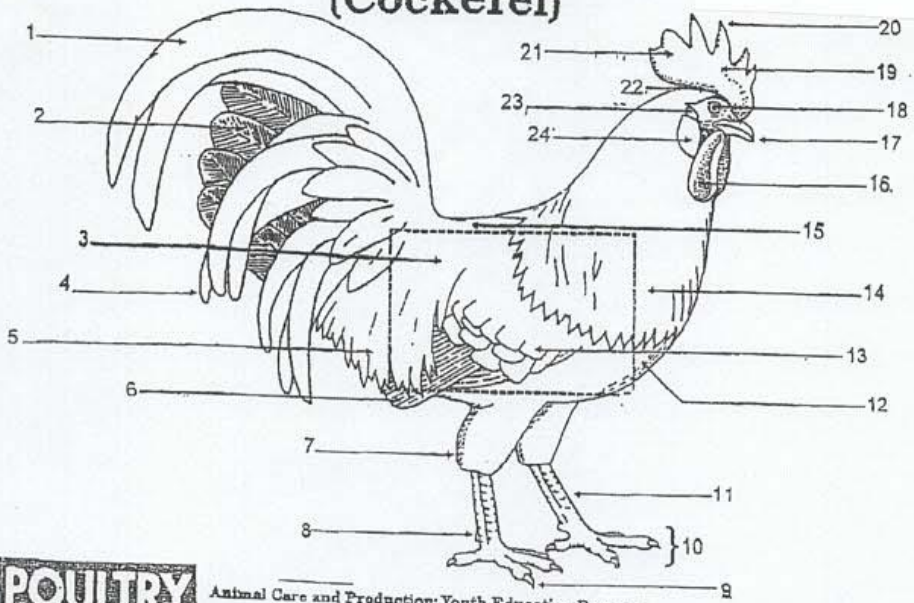
Animal Care and Production:  
Youth Education Program

Product distributed through the Curriculum Materials Service

- 1 \_\_\_\_\_
- 2 \_\_\_\_\_
- 3 \_\_\_\_\_
- 4 \_\_\_\_\_
- 5 \_\_\_\_\_
- 6 \_\_\_\_\_
- 7 \_\_\_\_\_
- 8 \_\_\_\_\_
- 9 \_\_\_\_\_
- 10 \_\_\_\_\_
- 11 \_\_\_\_\_
- 12 \_\_\_\_\_
- 13 \_\_\_\_\_
- 14 \_\_\_\_\_
- 15 \_\_\_\_\_

- 16 \_\_\_\_\_
- 17 \_\_\_\_\_
- 18 \_\_\_\_\_
- 19 \_\_\_\_\_
- 20 \_\_\_\_\_
- 21 \_\_\_\_\_
- 22 \_\_\_\_\_
- 23 \_\_\_\_\_
- 24 \_\_\_\_\_
- 25 \_\_\_\_\_
- 26 \_\_\_\_\_
- 27 \_\_\_\_\_
- 28 \_\_\_\_\_
- 29 \_\_\_\_\_

# Parts of a Chicken (Cockerel)



**POULTRY**  
LEARNING LABORATORY KIT

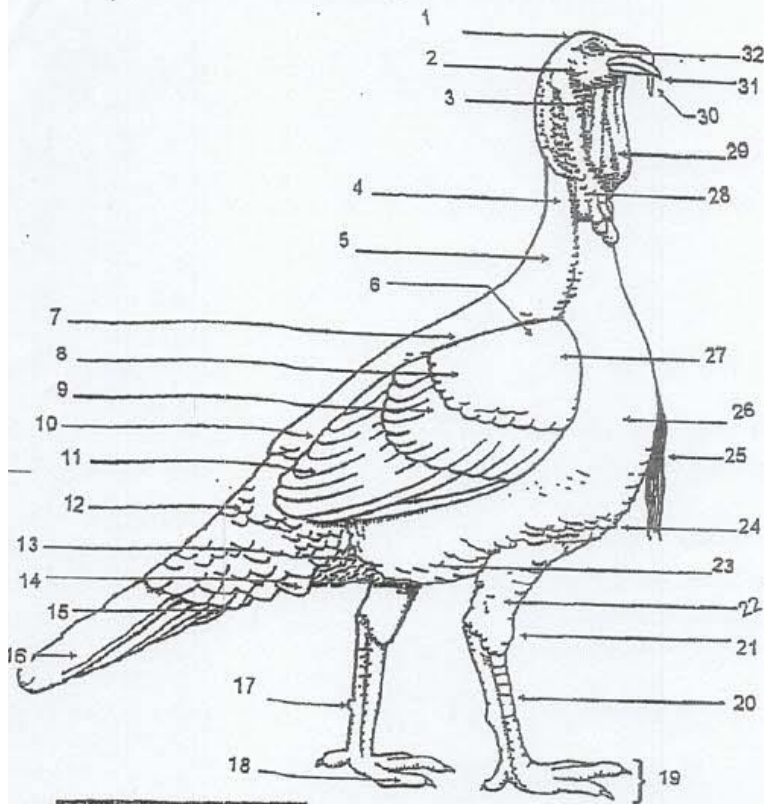
Animal Care and Production: Youth Education Program

Product distribution through the Curriculum Materials Service

- 1 \_\_\_\_\_
- 2 \_\_\_\_\_
- 3 \_\_\_\_\_
- 4 \_\_\_\_\_
- 5 \_\_\_\_\_
- 6 \_\_\_\_\_
- 7 \_\_\_\_\_
- 8 \_\_\_\_\_
- 9 \_\_\_\_\_
- 10 \_\_\_\_\_
- 11 \_\_\_\_\_
- 12 \_\_\_\_\_

- 13 \_\_\_\_\_
- 14 \_\_\_\_\_
- 15 \_\_\_\_\_
- 16 \_\_\_\_\_
- 17 \_\_\_\_\_
- 18 \_\_\_\_\_
- 19 \_\_\_\_\_
- 20 \_\_\_\_\_
- 21 \_\_\_\_\_
- 22 \_\_\_\_\_
- 23 \_\_\_\_\_
- 24 \_\_\_\_\_

# Parts of a Turkey



**POULTRY**  
LEARNING LABORATORY KIT

Animal Care and Production: Youth Education Program

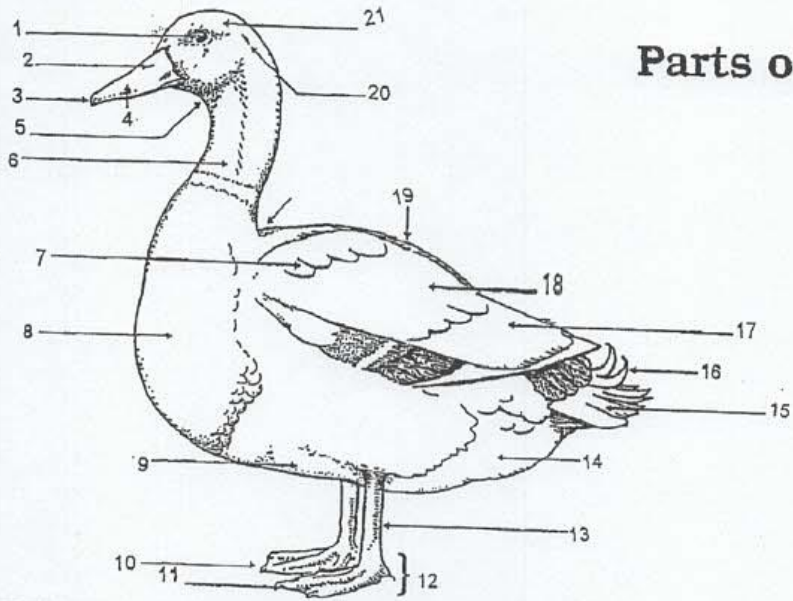
Product distributed through the Curriculum Materials Service

- 1 \_\_\_\_\_
- 2 \_\_\_\_\_
- 3 \_\_\_\_\_
- 4 \_\_\_\_\_
- 5 \_\_\_\_\_
- 6 \_\_\_\_\_
- 7 \_\_\_\_\_
- 8 \_\_\_\_\_
- 9 \_\_\_\_\_

- 10 \_\_\_\_\_
- 11 \_\_\_\_\_
- 12 \_\_\_\_\_
- 13 \_\_\_\_\_
- 14 \_\_\_\_\_
- 15 \_\_\_\_\_
- 16 \_\_\_\_\_
- 17 \_\_\_\_\_
- 18 \_\_\_\_\_
- 19 \_\_\_\_\_
- 20 \_\_\_\_\_
- 21 \_\_\_\_\_
- 22 \_\_\_\_\_
- 23 \_\_\_\_\_
- 24 \_\_\_\_\_
- 25 \_\_\_\_\_
- 26 \_\_\_\_\_
- 27 \_\_\_\_\_
- 28 \_\_\_\_\_
- 29 \_\_\_\_\_
- 30 \_\_\_\_\_
- 31 \_\_\_\_\_
- 32 \_\_\_\_\_



# Parts of a Duck



**POULTRY**  
LEARNING LABORATORY KIT

Animal Care and Production:  
Youth Education Program

Product distributed through the Curriculum Materials Service

- 1 \_\_\_\_\_
- 2 \_\_\_\_\_
- 3 \_\_\_\_\_
- 4 \_\_\_\_\_
- 5 \_\_\_\_\_
- 6 \_\_\_\_\_
- 7 \_\_\_\_\_
- 8 \_\_\_\_\_
- 9 \_\_\_\_\_
- 10 \_\_\_\_\_
- 11 \_\_\_\_\_

- 12 \_\_\_\_\_
- 13 \_\_\_\_\_
- 14 \_\_\_\_\_
- 15 \_\_\_\_\_
- 16 \_\_\_\_\_
- 17 \_\_\_\_\_
- 18 \_\_\_\_\_
- 19 \_\_\_\_\_
- 20 \_\_\_\_\_
- 21 \_\_\_\_\_